

F110 ACCESSORY SPEC BROCHURE



GETAC TECHNOLOGY CORPORATION

5F, Building A, No. 209, Section 1, Nangang Rd., Nangang Dist., Taipei City,
115018, Taiwan, R.O.C. Tel : +886 2 2785 7888 globalmarketing@getac.com |
www.getac.com

CARRY BAG

Features & Benefits

Constructed of durable Nylon / air mesh fabric, and featuring an adjustable padded shoulder strap, this compact carry bag provides sturdy protection for your tablet while giving maximum comfort. The functional pockets inside offer the optimal solution to transport the tablet and needed accessories together in one case, delivering extra convenience and go-anywhere productivity to mobile professionals.

Product Information

Dimensions : L 340 x W 260 x D 65 mm
Weight : 760g
Main Material : Nylon, air mesh fabric

SKU ID

GMBCX2



BATTERY, 3-CELL 2680MAH

Features & Benefits

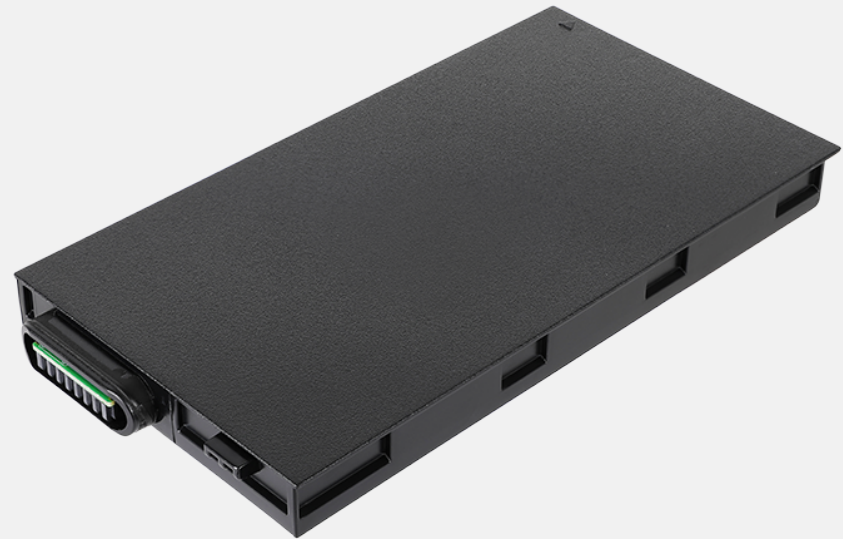
On the exterior side of the battery pack there is a physical battery indicator. The value of the corresponding green LEDs indicates the relative percentage of the battery charge. You can press the push-button to see the number of LEDs that light up. Each LED represents a 20% charge.

Product Information

Battery Type : Lithium-ion
Voltage : 11.4V
Capacity : Typical 2680mAh ; Min. 2640mAh
Dimensions : L 141 x W 73.4 x H 11.7mm
Weight : 160g

SKU ID

GBM3X7



EXTERNAL DUAL-BAY MAIN BATTERY CHARGER

Features & Benefits

This external dual-bay main battery charger is designed to charge up to two batteries at the same time. It provides you the benefit of charging and storing the 2 main batteries together when there are limited space and power socket.

Product Information

AC Input : 100V~240V
DC Output : 13.05V, 2.4A Max.
Number of charge bay : 2 Bay
Dimensions : L 160 x W 180 x H 72.5mm
Weight : 1.2kg
Support main batteries and high-capacity batteries.

SKU ID

GCMCEL (EU Power Cord)
GCMCUL (US Power Cord)
GCMCKL (UK Power Cord)
GCMCAL (AU Power Cord)
GCMCCL (CHN Power Cord)
GCMCTL (TW Power Cord)



HIGH-CAPACITY BATTERY 4200MAH

Features & Benefits

The high-capacity battery pack extends the system run time up to two times compared to the standard battery pack, providing a great solution for mobile professionals who require extra battery life for all-day computing.

Product Information

Battery Type : Lithium-ion
Voltage : 11.1V
Capacity : Typical 4200mAh ; Min. 4080mAh
Dimensions : L 141 x W 73.4 x H 17.7mm
Weight : 280g

SKU ID

GBM6X7



MULTI-BAY BATTERY CHARGER EIGHT BAY

Features & Benefits

The 8-bay multi-battery charger is designed to charge multiple battery packs simultaneously and provide users an efficient charging solution.

Product Information

AC Input : 100V~240V AC, 4.2A 50~60Hz

DC Output : 19.5V, 16.9A

* w / 330W AC Adapter

Number of charge bays : 8 bays

Dimensions : L 465 x W 245 x H 95.3~111.3mm

Weight : 4.7 kg ,not including battery packs

Support main batteries and high-capacity batteries.

SKU ID

GCECEN (EU Power Cord)

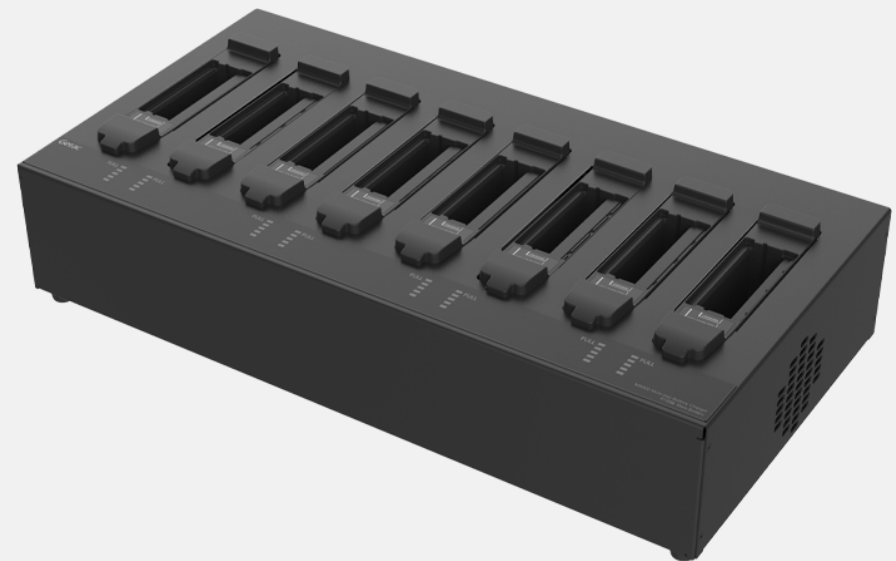
GCECUN (US Power Cord)

GCECKN (UK Power Cord)

GCECAN (AU Power Cord)

GCECCN (CHN Power Cord)

GCECTN (TW Power Cord)



100W TYPE-C AC ADAPTER

Features & Benefits

The 100W Type-C AC adapter as an additional charging solution to charge Getac rugged tablets and laptops with inherent USB type-C ports as well as the power delivery functionality. The Type-C adapter features a reversible connector type that reduces connector damages due to misuse.

Product Information

Input : 100V-240V
Output : 20V, 5A, 100W
Dimensions : L 140 x W 65 x H 25mm
Weight : 326g
Input cable length : 1830mm
Output cable length : 1500mm

SKU ID

GAT1E1 (EU Power Cord)
GAT1U1 (US Power Cord)
GAT1K1 (UK Power Cord)
GAT1A1 (AU Power Cord)
GAT1C1 (CHN Power Cord)
GAT1T1 (TW Power Cord)
GAT1I1 (IN Power Cord)



120W DC-DC VEHICLE ADAPTER

Features & Benefits

The 120W vehicle adapter comes with a choice of two types of connections: a bare wire with individual wire ends already stripped, and a cigarette lighter plug for easy connection to the cigarette lighter socket in the vehicle interior, providing a convenient way to charge and power your tablet while you are on the road.

Product Information

Input Voltage : 11VDC~ 32VDC

Output Voltage : 19VDC

Output current : 6.32A Max.

Case Dimensions : L 131.5 x W 65.6 x H 30mm

Weight : 362g

Input cable length : 1900mm

Output cable length : 1000mm

SKU ID

GAD2X4 (Cigarette Lighter Plug Version)

GAD2X8 (Bare Wire Version)



90W AC ADAPTER

Features & Benefits

This adapter is designed to power the device and charge its internal battery from an AC power source. A country-specific power cord is included with the adapter to fit the local power outlet in your destination country.

Product Information

Input : 100V-240V

Output : 19V, 4.74 A, 90W

Dimensions : L 140.1 x W 65.1 x H 25.4 mm

Weight : 275 g

Input cable length : 1830mm

Output cable length: 1500mm

SKU ID

GAA9U6 (US Power Cord)

GAA9E6 (EU Power Cord)

GAA9K6 (UK Power Cord)

GAA9C6 (CHN Power Cord)

GAA9A6 (AU Power Cord)

GAA9T6 (TW Power Cord)

GAA9I6 (IN Power Cord)

GAA9G6 (ARG Power Cord)

GAA9J6 (JPN Power Cord)

GAA9R6 (KR Power Cord)



90W MIL-STD-461 AC ADAPTER

Features & Benefits

This MIL-STD-461G AC adapter has passed the military standard and testing specification to ensure the conducted emissions (CE), conducted susceptibility (CS), radiated emissions (RE), and radiated susceptibility (RS) of the adapter can meet the requirements for the control of electromagnetic interference.

Product Information

Input : 115V-230V, 1.6A 50~60Hz
Output : 19V, 4.74A, 90W
Dimensions : L 170 x W 75 x H 45mm
Weight : 880g (without power cord)
Input cable length : 1530mm
Output cable length : 1800mm

SKU ID

GAAGE5 (EU Power Cord)
GAAGU5 (US Power Cord)
GAAGK5 (UK Power Cord)
GAAGC5 (CHN Power Cord)
GAAGA5 (AU Power Cord)
GAAGI5 (IN Power Cord)
GAAGT5 (TW Power Cord)



CAPACITIVE STYLUS & TETHER

Features & Benefits

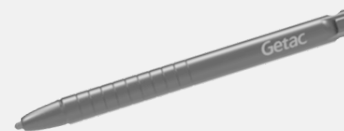
This capacitive stylus is lightweight and easy to control, spring-loaded nib increasing the durability also allowing smooth and comfortable interaction with the touch screen without worrying about scratching the screen or leaving fingerprints on it. The stylus comes with a tether to keep it attached to the tablet to get lost or misplaced.

Product Information

Nib Material : Conductive PET Fiber
Stylus Dimensions : 108.7 mm ; Ø9 mm
Tip size : 2.7 mm ; Ø2.8 mm
Color : Black
Tether Length : 304 mm

SKU ID

GMPSXN



DIGITIZER PEN

Features & Benefits

The digitizer pen provides a more accurate and easy way for data entry and handwritten signature. A shortcut button allows the right mouse button functionality when using the pen.

Product Information

Stylus Dimensions : 109mm ; Ø9mm
Tip size : 2.0mm ; Ø1.65mm
Tether Length : 292mm

SKU ID

GMPDX6



GETAC DS100 USB-C DOCKING STATION

Features & Benefits

The Getac DS100 USB-C Docking Station, featuring a slim and compact design, seamlessly consolidates cables on the workstation. This allows users to swiftly create a personalized workspace and organize their daily office environment. Compatible with various Getac laptop and tablet models, it provides extra connectivity and multiple I/O ports for additional peripherals and data sources. With support for MAC Address Pass-Through, Wake-on-LAN (WoL), and PXE Boot, the DS100 aids IT administrators in maintaining a secure, efficient, and well-managed network infrastructure. (The docking station's performance, including transfer speeds and display capabilities, may be limited by chipset and operating system when used with Getac Android systems. See the user manual for details.)

Product Information

Dimensions: L 207 x W 90 x H 31mm (8.15" x 3.54" x 1.22")

Weight: 335g (0.74lbs)

Power Cable Length: 1.8m (5.9ft)

USB-C Upstream Cable Length: 1m (3.28ft)

I/O Ports: DC in Jack x 1, Audio in/out combo x 1, USB 2.0 x 2, USB 3.2

Gen 1 Type-A x 3, USB 3.2 Gen 2 Type-C x 2, LAN x 1, HDMI 2.0 x 1,

Display port x 2

SKU ID

GDDSE1 (EU Power Cord)

GDDSU1 (US Power Cord)

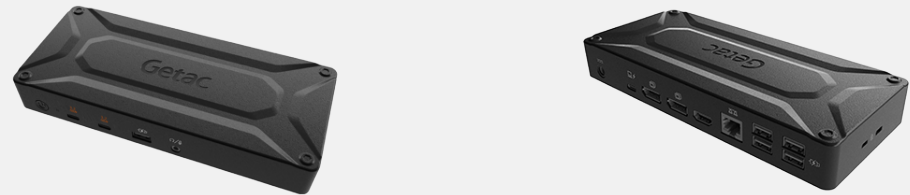
GDDSK1 (UK Power Cord)

GDDSA1 (AU Power Cord)

GDDSC1 (CHN Power Cord)

GDDST1 (TW Power Cord)

GDDSI1 (IN Power Cord)



LCD SCREEN PROTECTION

Features & Benefits

This screen protection film is cut precisely to fit the F110 tablet and is easy to install and remove without leaving a sticky residue. With anti-glare coating, it not only protects the screen from the rigors of daily use but also help diffuses light on the screen and reduces glare, providing effortless readability for displayed information under common ambient lighting conditions.

Product Information

Dimensions : L 266.2 x W 154.1mm
Main Material : PET

SKU ID

GMPFXR



HARD HANDLE

Features & Benefits

The multi-functional hard handle offers extra mobility to field workers to grab-and-go when situation required.

Product Information

Dimensions : L 323 x W 91.2 x H 30.1 mm
Weight : 170g
Main Material : PC

SKU ID

GMHDX6



SHOULDER HARNESS 4-POINT

Features & Benefits

This shoulder harness has four snap hooks which attach to the corner rings on the tablet, and can be easily detached as well. The harness is worn in a backpack style, allowing the tablet to be carried hands-free in front of the user at a belt level for easy accessibility. It also delivers optimal support and a comfortable fit during movement, thanks to its wide soft padding and adjustable straps.

Product Information

Dimensions : 1380 x 372mm
Main Material : Polyester

SKU ID

GMS4X4



SHOULDER STRAP 2-POINT

Features & Benefits

This shoulder strap attaches via two holders at the back of the tablet and is adjustable to fit most body sizes for both cross-body and shoulder carry. With its durable, sturdy design, the strap not only provides a comfortable, grip-free carrying option of the tablet but also helps in avoiding accidental drops while on the move. The shoulder strap can also attach to the detachable keyboard (sold separately) via two D-rings on the built-in handle.

Product Information

Dimensions : 38 x 1530mm
Main Material : Polyester

SKU ID

GMS2X8



SPARE MAIN STORAGE WITH CANISTER

Features & Benefits

Getac Spare Main Storage with canister is designed to provide you the ease of installation and allow you to remove your confidential data when your device is sent for service.

Product Information

Capacity : PCIe NVMe 256GB/512GB/1TB/2TB
Dimension : L 112.7 x W 27.6 x H 9.8mm
Weight : 28g

SKU ID

GSSEX5 (256GB PCIe NVMe SSD)
GSSFX5 (512GB PCIe NVMe SSD)
GSSGX5 (1TB PCIe NVMe SSD)
GSSHX3 (2TB PCIe NVMe SSD)



DETACHABLE KEYBOARD

Features & Benefits

The detachable keyboard docks via a Pogo Pin connector on the bottom of the F110 tablet, allowing you to easily transform the tablet into a laptop without reliance on extra tools or accessories. Featuring red backlighting, 88 full-size keys, and an integrated touchpad, the keyboard allows for a user-friendly, laptop-like operation to minimize mistakes and increase the efficiency as you perform data-intensive tasks. With the adjustable tablet bracket, it also acts as a screen cover and versatile stand that offers multiple viewing angles (up to 110 degrees) for comfortable use and on-the-job flexibility.

Product Information

Dimensions : L 326 x W 282 x H 26.5mm Weight : 1110g
Ruggedness : IP66 (only KBD), 4 ft drop (w/z system & closed)
Operating Temp : -29°C to 63°C Storage Temp : -51°C to 71°C
Humidity : 0~95% according to MIL-STD 810H method 507.6 Procedure II Aggravated (Non-OP)

SKU ID

GDKBUL (US)	GDKBIL (AR)
GDKBBL (DE)	GDKBKL (KR)
GDKBCL (UK)	GDKBLL (PL)
GDKBDL (FR)	GDKBML (ES,Spanish)
GDKBEL (IT)	GDKBNL (FDNS)
GDKBGL (Traditional Chinese)	GDKBTL (TR)
GDKBHL (RU)	GDKBWL (International US)
	GDKBFL (CF, Canadian French)



GETAC RUGGED KEYBOARD

Features & Benefits

The Getac Rugged Keyboard is designed with VESA and AMPS mounting capability that allow it to be placed firmly in the vehicle. It has gone through vigorous test that comply with MIL-STD 810G and IP65. It also features with 88 full sized keys, red LED backlight with five levels of brightness and impressive key response that will truly enhance user experience.

Product Information

Dimension : 307.7 x 194 x 32 mm
 Weight : 870g
 Compatibility : Windows 10 Pro, Windows 11 Pro
 Backlit : Red LED. five levels of brightness
 Coiled Cable Length : USB 2.0 interface, 1.83m

SKU ID

Getac Rugged Keyboard	Getac Rugged Keyboard with Smart card and USB 2.0	Getac Rugged Keyboard with Smart card and LF/HF RFID
GDKBU9 (US) GDKBC9 (UK) GDKBB9 (DE) GDKBD9 (FR)	GDKBU6 (US) GDKBC6 (UK) GDKBB6 (DE) GDKBD6 (FR)	GDKBU7 (US) GDKBC7 (UK) GDKBB7 (DE) GDKBD7 (FR)



ROTATING HAND STRAP & KICKSTAND

Features & Benefits

The Rotating Hand Strap is designed to make using the tablet easier and more convenient to carry. The hand strap is adjustable to fit most hand sizes and can be rotated 360 degrees to find the ideal viewing angle while on-the-go. It also includes a built-in kickstand that allows for handsfree usage on flat surfaces, providing more on-the-job flexibility.

Product Information

Dimensions : L 205 x W 116 x H 20mm
Weight : 155g
Main Material : PU

SKU ID

GMHRXJ



OFFICE DOCK WITH AC ADAPTER

Features & Benefits

The Getac office dock brings out multiple I/O ports for connecting essential peripheral devices in the office environment. Through the integrated ethernet, RS232, or USB connections, users can quickly collect and synchronize field data with central offices for real-time reporting and analytics. The HDMI and VGA ports also provide a convenient solution for sharing presentations or worksheets from a larger screen.

Product Information

Dimensions : L 223.4 x W 124.9 x H 240mm

Weight : 1000g

Docking Connector : POGO

* w / 90W AC Adapter

I/O Ports : DC in Jack x1, Audio Output x 1, Microphone x1, USB 2.0 x 3, USB 3.0 x1, LAN x1 , HDMI x 1, VGA x 1, Serial Port x 2, Kensington Lock x 1

SKU ID

GDODE7 (EU Power Cord)

GDODU7 (US Power Cord)

GDODK7 (UK Power Cord)

GDODA7 (AU Power Cord)

GDODC7 (CHN Power Cord)

GDODT7 (TW Power Cord)

